

Label Rewinder

Model : LMMC10A

Label rewriter capable of rewinding rolls up to 4 inches (102mm) wide, up to 8 inches (203mm) outside diameter at speeds up to 10 inches (254mm) per second.

The LMMC10A comes complete with 3" diameter core holder and can also be used as a "coreless rewind" where labels are rewound directly onto the shaft.

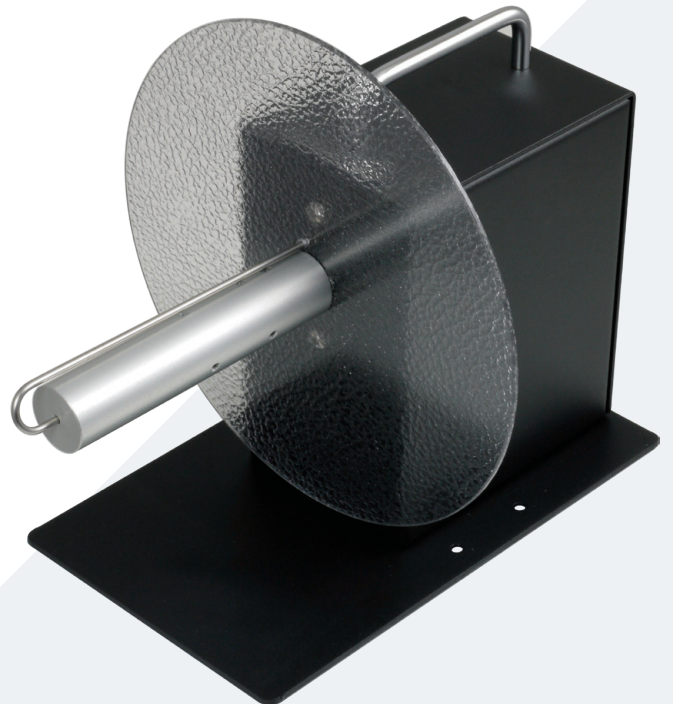
FEATURES

LMMC10A

- label width up to 4 inches (102mm)
- max label roll outside diameter 8 inches (203mm)
- rewind speed of up to 10 inches per second
- 3 inch (76mm) core or coreless
- bi-directional
- AC/DC power operation

SPECIFICATIONS

Dimensions (mm): 241 (W) X 203 (H) X 229 (W)
Net weight (kg): 6.4



Specifications may change without notice