

Wedderburn®

Since 1896.

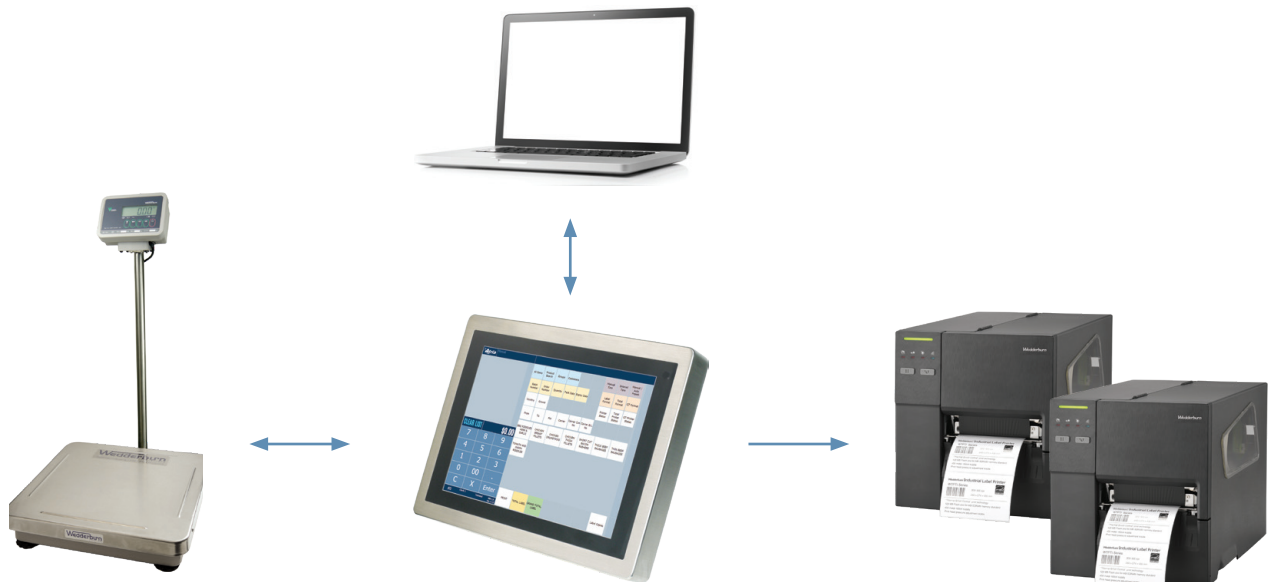
Atria IPS Industrial Weigh Labelling System

Model: WSAIPS



Modular System engineered to efficiently weigh & label product, record production data and deliver effective productivity reports.

An intelligent and highly flexible weigh labelling system, allowing connectivity to a range of industrial scales and balances and multiple label printers. User interface can be installed in choice of non-IP rated 15" touch screen panel PC or IP66 rated Stainless Steel 15" or 10" touch screen panel PC's for harsher environments. Atria IPS is an off-the-shelf solution that can be fine tuned to your specific operational needs.



Designed for Operational Efficiency

▲ Approved for trade use

Can be used for trade approved labelling of products when connected to a Wedderburn Trade Approved scale or balance

▲ 3 level labelling (item, carton and pallet labelling)

Allows efficient and accurate labelling of Item, carton and pallet.

▲ User entry or selection fields

User key-in fields and user list selection fields can be set as mandatory to ensure that all necessary information is selected or entered prior to printing a label. Key in fields can also be assigned with a minimum or maximum number of characters to ensure that correct information is entered.

▲ Flexible interface

User interface can be customised for specific operational requirements.

▲ No-fuss traceability

Batch number recording allows for Batch Report to be generated showing which customers a batch was labelled for.

▲ Flexible labelling options

Out of the box supply chain carton and pallet labelling as well as a range of item/pack label formats. Three level labelling item, carton and pallet. Label weigh or non-weighed goods.

▲ Automatic or manual print modes

The print mode for weighed goods can be set to print automatically once a stable weight is reached, or manually so that the label will not print until instructed by the operator.



Specifications may change without notice

▲ Weighing Scales.

Labels, Labelling Equipment, Packaging Equipment, Weighing Scales, POS Systems, Food Equipment, Maintenance & Repairs, Hire.

▲ Connect to multiple printers

For further flexibility the systems can be connected to one, two or more printers. This allows printing on different size labels without having to change label rolls.

▲ Convenient label re-print function

There are times in all production lines where a label needs to be re-printed, most commonly because the label has been incorrectly applied. Atria IPS allows re-printing of a label without affecting production totals.

▲ Mixed item total labels

This function allows a number of different items to be printed on one carton or pallet label showing the weight and quantities of each of the items packed on the one label.

▲ Foreign language printing

Label details can be printed in just about any foreign language, which is often required for exported products

▲ Country of origin labelling

Atria IPS has the complete list of images required to comply with Australian Country of Origin Labelling requirements

▲ Logging system

Convert the system into data logging only system by disabling printing function

▲ Weight ranges (grading)

A grade can be applied to a product depending on what weight range the product falls in to. Grade weight ranges can be configured globally or product specific. This feature is commonly used in the Poultry industry

▲ Delete labels from totals

Delete incorrectly or accidentally printed labels in order to maintain the integrity of production totals.

▲ Gain greater insights with production report

As each label is printed, specific data is captured and log to the database. With the optional basic production report package, reports can be viewed, printed or save for further analysis.

▲ Data exchange

Import and Export data between Atria manager and MRP/ERP system using the Atria API option.

▲ Convenient remote support

The system can be supported remotely which can be very convenient for software updates or technical support.

System Overview

- legal for trade use when connected to a trade approved scale
- random weight and non-weighed product labelling
- item, carton and pallet labelling
- connect to multiple printers
- flexible batch numbering and user entry fields
- serial numbering and traceability
- customer selection and customer order number key in fields
- customer specific product pricing
- country of origin labelling
- foreign language printing
- pack and shelf life date adjustment
- production reports (optional module)
- configurable user interface
- customisable permissions to lock down with supervisor escalation
- multiple user data selection / user entry fields
- supports a range of industry standard barcodes
- data recording of each label printed
- reprint last or any label without adding to totals
- delete incorrect label
- approved DAWR Export Mark (official mark) printing (optional module)
- mixed item total label printing
- grading (weight range) feature (optional module)
- logging only function
- back office data management software
- import/export via Atria API (optional module)
- remote support



Specifications may change without notice

▲ Weighing Scales.

Wedderburn®
Since 1896.

Labels, Labelling Equipment, Packaging Equipment, Weighing Scales,
POS Systems, Food Equipment, Maintenance & Repairs, Hire.

Atria IPS Industrial Weigh Labelling System

Model: WSAIPS

Gain Greater Insights with Data & Productivity Reports

As each product is labelled, specific data is captured and entered into the database. This enables a variety of data and productivity reports to conveniently be viewed in a meaningful and easy to comprehend format. With the use of Atria Manager backoffice software, reports can be viewed, printed and saved to a file for further analysis.

In addition to standard reports available, Wedderburn's Software Engineers can customise reports based on your operational needs.

Reports generally fall into one of two categories; data reports and production reports.

▲ Data Reports

Data Reports are run by; products, groups or customers. Information may include;

- customer ID and name or product PLU and description
- quantity packed, date, weight and price

▲ Production Reports

Each Production Report can be run based on a specified date range and standard Production Reports include;

- Production Summary; displays production history
- Product Totals; displays production totals of each product
- Group Totals; displays production totals of each product for a selected group
- Customer Totals; displays production totals of each product for a selected customer
- Batch Number Totals; displays the production totals of each product for a selected batch number

Printed On: 29/08/2019 4:46:13 PM
Batch Number: 12345678

Batch Number Totals
Report from 28/08/2019 to 29/08/2019

PLU	PLU Name	Customer	Quantity	Weight (kg)	Price (\$)
1	CHICKEN BREAST FILLETS	Customer 1	8	8.000	15.96
3	CHICKEN DRUMSTICKS	Customer 1	5	5.000	19.95
4	THICK BEEF SAUSAGES	Customer 1	4	4.000	20.16
5	TOMATO AND ONION RISSOLES	Customer 2	5	5.000	29.95
6	BBQ RISSOLES HERB & GARLIC	Customer 2	3	3.000	20.97
7	THIN BEEF SAUSAGES	Customer 2	3	3.000	23.97
8	SHORT CUT BACON RASHERS	Customer 1	7	7.000	63.11
Totals :			37	37.000	210.08

Page 1 of 1

Printed On: 29/08/2019 4:15:30 PM
Customer: Customer 2

Customer Totals
Report from 28/08/2019 to 29/08/2019

PLU	PLU Name	Batch Numbers	Quantity	Weight (kg)	Price (\$)
2	CHICKEN THIGH FILLETS	98765432	5	5.000	14.95
4	THICK BEEF SAUSAGES	98765432	2	2.000	9.98
5	TOMATO AND ONION RISSOLES	12345678	8	8.000	47.92
6	BBQ RISSOLES HERB & GARLIC	98765432	5	5.000	29.95
7	THIN BEEF SAUSAGES	12345678	3	3.000	20.97
8	SHORT CUT BACON RASHERS	12345678	3	3.000	23.97
Totals :			21	21.000	117.79

Page 1 of 1

Printed On: 29/08/2019 10:50:00 AM
Order Number: 10001
Customer: Customer 1

Packing List
Report from 28/08/2019 to 29/08/2019

PLU	PLU Name	Batch Numbers	Quantity	Weight (kg)	Price (\$)
1	CHICKEN BREAST FILLETS	12345678	8	8.000	21.93
3	CHICKEN DRUMSTICKS	98765432	3	3.000	5.97
4	THICK BEEF SAUSAGES	12345678	5	5.000	19.95
7	THIN BEEF SAUSAGES	12345678	4	4.000	20.16
8	SHORT CUT BACON RASHERS	12345678	2	2.000	15.96
Totals :			29	29.000	141.13

Page 1 of 1

Printed On: 29/08/2019 9:50:15 AM

Product Totals

Report from 28/08/2019 to 29/08/2019

PLU	PLU Name	Quantity	Weight (kg)	Price (\$)
■ 1	CHICKEN BREAST FILLETS	11	11.000	21.93
		28/08/2019	1	1.000 2.03
		28/08/2019	10	10.000 19.90
■ 2	CHICKEN THIGH FILLETS	5	5.000	14.95
		28/08/2019	5	5.000 14.95
■ 3	CHICKEN DRUMSTICKS	5	5.000	19.95
		29/08/2019	5	5.000 19.95
■ 4	THICK BEEF SAUSAGES	6	6.000	30.14
		28/08/2019	2	2.000 10.18
		29/08/2019	4	4.000 19.96
■ 5	TOMATO AND ONION RISSOLES	8	8.000	47.92
■ 6	BBQ RISSOLES HERB & GARLIC	3	3.000	20.97
■ 7	THIN BEEF SAUSAGES	5	5.000	39.95
■ 8	SHORT CUT BACON RASHERS	7	7.000	63.11
Totals :		50	50.000	258.92

Page 1 of 1

Printed On: 29/08/2019 9:05:50 AM
Device: 1 - Terminal

Production Summary
Report from 29/08/2019 to 29/08/2019

Date & Time	PLU	PLU Name	Operator	Quantity	Weight (kg)	Serial Number	Batch Number
29/08/2019 9:02 AM	1	CHICKEN BREAST FILLETS	Clerk 1	2	10.000	200010	
29/08/2019 8:59 AM	1	CHICKEN BREAST FILLETS	Clerk 1	5	5.000	200029	
29/08/2019 8:59 AM	1	CHICKEN BREAST FILLETS	Clerk 1	1	1.000	200046	
29/08/2019 8:59 AM	1	CHICKEN BREAST FILLETS	Clerk 1	1	1.000	200045	
29/08/2019 8:59 AM	1	CHICKEN BREAST FILLETS	Clerk 1	1	1.000	200044	
29/08/2019 8:59 AM	1	CHICKEN BREAST FILLETS	Clerk 1	1	1.000	200043	
29/08/2019 8:59 AM	1	CHICKEN BREAST FILLETS	Clerk 1	1	1.000	200042	
29/08/2019 8:59 AM	1	CHICKEN BREAST FILLETS	Clerk 1	5	5.000	200028	
29/08/2019 8:59 AM	1	CHICKEN BREAST FILLETS	Clerk 1	1	1.000	200041	
29/08/2019 8:59 AM	1	CHICKEN BREAST FILLETS	Clerk 1	1	1.000	200040	
29/08/2019 8:59 AM	1	CHICKEN BREAST FILLETS	Clerk 1	1	1.000	200039	
29/08/2019 8:59 AM	1	CHICKEN BREAST FILLETS	Clerk 1	1	1.000	200038	
29/08/2019 8:59 AM	1	CHICKEN BREAST FILLETS	Clerk 1	1	1.000	200037	

Page 1 of 1

Specifications may change without notice

▲ Weighing Scales.

Labels, Labelling Equipment, Packaging Equipment, Weighing Scales, POS Systems, Food Equipment, Maintenance & Repairs, Hire.