

Balling Machine

Model : WFPMDB03

The ABM balling machine delivers rounded balls and enables you to be able to achieve portion control every time. Quick and easy portion control adjustment helps to make up to 4000 balls /hour. The conveyor is designed in such a way that it maintains the shape of the balls whilst delivering them to a working height. It has a small footprint which makes it ideal to store when not in use. The machine can be used standalone but ideally in conjunction with the Wedderburn WFP2013 forming machine to ensure your portion consistency.

FEATURES

WFPMDB03

- robust stainless steel construction
- smaller footprint
- portion controlled balls up to 4000/hr
- easy adjustment for portion size from 22mm up to 35mm
- water resistant to IP54 standard
- variable rolling speeds
- adjustable water feed for lubrication

OPTIONAL BALLING KITS

RD0550	28mm baller kit
RD0552	35mm baller kit
RD0549	25mm baller kit



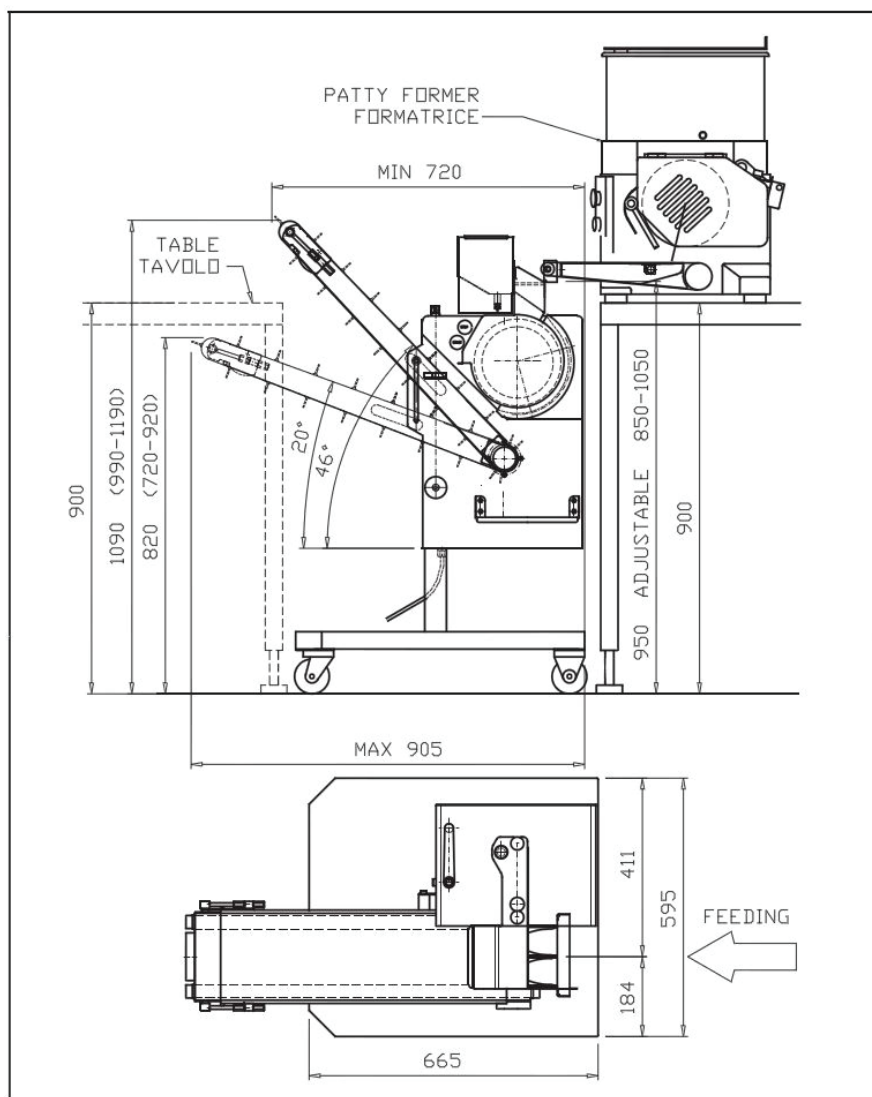
Specifications may change without notice

SPECIFICATIONS

Dimensions (mm): 595 (W) x 875 (D) x 1185 (H)
(*Height is adjustable from 610 mm)

Power: 10 AMP Single phase plug

Net weight (kg): 70



WFP2013
PATTY FORMING MACHINE



WFPMDB03
BALLING MACHINE

Specifications may change without notice