

WS004SFC

Single Frame Platform Scale



Features:

- heavy duty 80mm square tubular frame with 4mm walls
- ball and cup swivel mounted levelling legs providing side impact protection
- 4 x 2000 kg IP67 nickel plated load cells with overload stops
- ideal for industrial applications and forklift loading
- 4mm powder coated checker plate weighing surface
- 4 convenient lifting rings can be easily unscrewed if not required
- low profile, 125mm overall height
- wall or desk mounted display options
- alternate models available: galvanised, zinc plated or stainless steel frames with various platform sizes

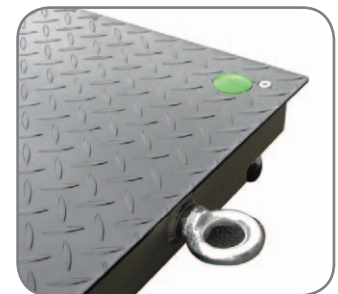
Options:

- pole mounted display

Platform size (mm): 1 200 x 1 200

Overall dimensions (mm): 1 200 x 1 200 x 125

Capacities: 1 500 kg x 0.5 kg
3 000 kg x 1 kg
5 000 kg x 2 kg



close up of convenient lifting ring



connect to a choice of indicators
DI-162 depicted above